

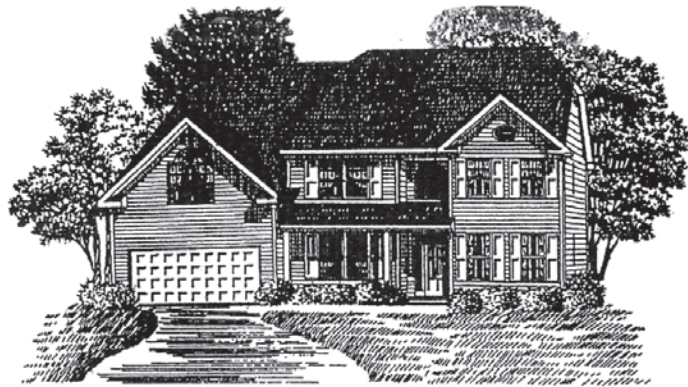
# The Savannah

WOODBRIDGE  
POINTE  
*of Knoxville*

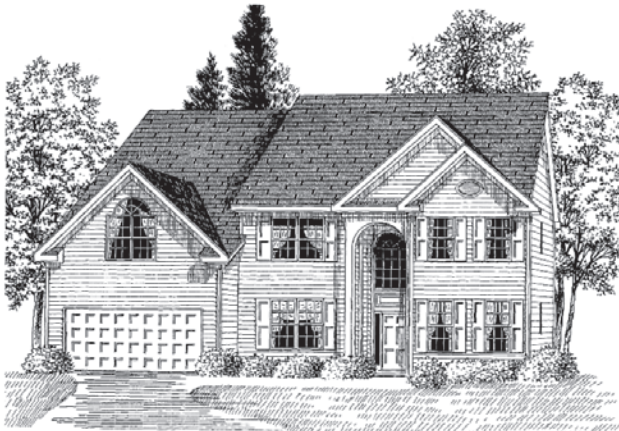
**Mc**  
**Builders**  
Since 1985



**Elevation A  
Model 3**



**Elevation B  
Model 3**



**Elevation C  
Model 3**

For more information call:  
**Kathy Allen (757) 434-7509**  
**Sales Center (757) 502-0701**

Updated 1/8/08

Builder Reserves the right to substitute plans, prices, components and specifications and withdraw or modify any plans without notice. Individual homes may vary from the models or each other depending on field conditions.

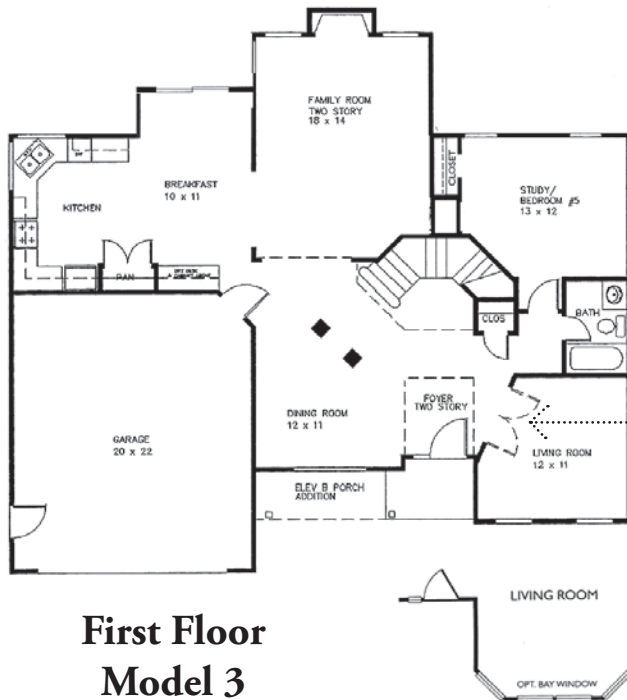


**William E. Wood**  
and Associates  
**REALTORS**



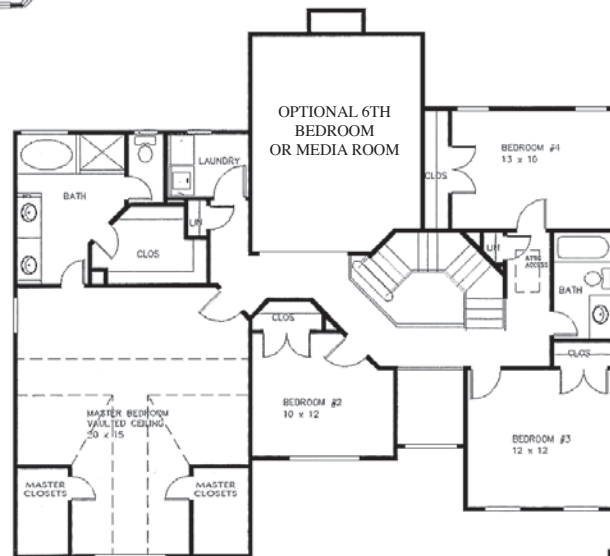
**NEW HOMES DIVISION**  
[www.williamewood.com/newhomes](http://www.williamewood.com/newhomes)

# The Savannah



**First Floor  
Model 3**

**Elev A Option**



**Second Floor  
Model 3**

**Elev A Option**

For more information call:  
**Kathy Allen (757) 434-7509**  
**Sales Center (757) 502-0701**

Updated 1/8/08

Builder Reserves the right to substitute plans, prices, components and specifications and withdraw or modify any plans without notice. Individual homes may vary from the models or each other depending on field conditions.



**NEW HOMES DIVISION**  
[www.williamewood.com/newhomes](http://www.williamewood.com/newhomes)

# Standard Features

## INTERIOR FEATURES

- Direct gas vent fireplace with marble surround
- Painted interior trim molding
- Raised panel interior doors
- Formal dining room with chair rail accent
- Plaster walls and ceilings
- Smooth walls in all baths, kitchen and above chair rail in dining room
- Dramatic 2-story entry foyer per plans
- Wall to wall carpeting with 6lb. padding
- Upgraded no-wax vinyl in kitchen and baths
- Surround sound pre-wire
- Cable TV pre-wire in family room and all bedrooms
- Telephone pre-wire in all bedrooms, family room and kitchen
- Walk-in closet in master bedroom
- Washer & electric dryer connections
- Smoke detectors in all bedrooms
- Nine foot ceilings on first floor
- Pre-wire for garage door opener
- Wilsonart hardwood floor in foyer, approximately a 5 x 6 area (except C model)
- Chrome light fixtures as per model
- Security system with one key pad

## KITCHEN FEATURES

- 42" Maple kitchen cabinets with crown molding
- Large pantry with abundant storage per plans
- Double stainless steel sink with vegetable sprayer
- Kenmore appliances: dishwasher, gas or electric range, microwave, garbage disposal
- Ice-maker hook-up
- Pass-thru in kitchen per plans

For more information call:  
**Kathy Allen (757) 434-7509**  
**Sales Center (757) 502-0701**

Updated 1/8/08

Builder Reserves the right to substitute plans, prices, components and specifications and withdraw or modify any plans without notice. Individual homes may vary from the models or each other depending on field conditions.

## BATHROOM FEATURES

- Cultured marble sink top with wood vanities
- Mirrors over vanities
- Easy maintenance fiberglass tubs
- Separate shower in master bath
- Jetted tub in master bath with tile tub surround

## EXTERIOR FEATURES

- 10 x 10 Concrete Patio
- Two car garages
- Crawl space foundation
- Maintenance free vinyl siding
- Maintenance free trim wrap
- Exterior house wrap
- Aluminum gutters and downspouts
- 30 year architectural roof
- Termite soil treatment
- Side service door in garage
- Window screens on all operable windows
- Underground utilities
- Full front sodded front yard
- Professional landscape package
- Two exterior water faucets
- Three weather proof electric outlets

## ENERGY SAVING FEATURES

- VNG energy efficient home
- Energy efficient gas heat and central air conditioning
- 50-gallon natural gas hot water heater
- Insulated double pain single hung windows
- Fiberglass insulated steel entry door
- R-30 Insulated ceiling
- R-13 Insulated walls
- R-19 Insulated floors
- Polyseal air infiltration barrier
- Prewire for electric back up generator

## ADDITIONAL FEATURES

- One-year builders warranty
- HW10 Homeowners warranty



NEW HOMES DIVISION  
[www.williamewood.com/newhomes](http://www.williamewood.com/newhomes)